

**IMPROVE PRODUCTIVITY AND THE
WORKING ENVIRONMENT
WITH THE FLEXIBLE AND COMPACT
SOCO SYSTEM PALLETISING ROBOT**

**Are You still stacking your
cases manually?**

Invest in an automated palletising
solution, which will pay for itself within
16 months running just eight hours a
day.

See it in action at www.socosystem.com

**SOCO
SYSTEM**
www.socosystem.com

PALLETISING SOLUTIONS FOR CURRENT AND FUTURE NEEDS

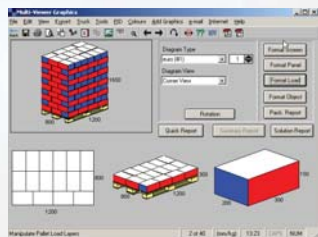
The SOCO SYSTEM palletising robot streamlines production, eliminates strenuous tasks and is extremely cost-effective.

The robot is available in several versions for different pallet sizes and loading heights, etc.

A wide range of conveyor and functional modules are available for the palletizing robot and can be added initially or subsequently as the need arises.

(See examples on the back page.)

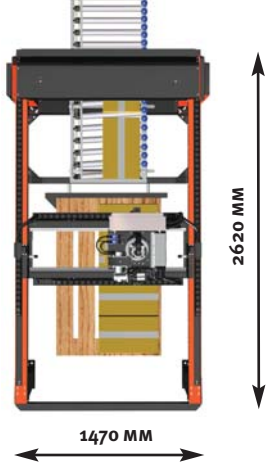
The robot is supplied with a gripping tool designed for your palletising tasks.



Pallet patterns generated using CAPE PACK® or similar software can be transferred online or via diskette to the robot IPC.

The robot features a driven conveyor. The conveyor is controlled to allow items to accumulate and be correctly positioned in relation to the gripping tool.

Easy pallet positioning. Pallet guides ensure and facilitate correct positioning of the pallet.



Compact design.
The illustration shows a robot for pallets of size 800 x 1200 mm.



The control panel is located in one of the robot's pillars.



The palletising robot is extremely easy to operate and reconfigure for different pallet patterns. The software is Windows-based and the IPC can

be used to control any peripheral equipment such as pallet conveyors, pallet magazines, etc.



The picture illustrates a palletising robot without safety fence.

Plug and play

The robot is quick and easy to install in an existing production environment. It is tested before delivery using your products and pallet patterns.

New pallet pattern in 30 seconds

If the pallet pattern is already in the IPC, it takes no more than 30 seconds to switch to another program.

New pallet patterns generated using optimisation software such as CAPE PACK® can be transferred online or via diskette.

Safe to operate, simple and versatile

The machine requires minimal maintenance and is easy to access.

It is equipped with safety fencing that meets CE requirements.

Stainless steel for wet environments

The robot can be supplied wholly or partially in stainless steel.

The robot has powder coated finish in colours RAL2002 and RAL9005 as standard. Special colours are available for an additional charge.

Greater pallet capacity - better freight economy

All types of cases, even heavy and bulky ones, can be stacked at heights up to 2700 mm in order to fully utilise the capacity of lorries and containers.

Call us now!

We can advise you on your existing and future palletising requirements and provide you with a specific proposal and quotation.

GENERAL SPECIFICATIONS

Infeed conveyor

The standard width is 500 mm.

Axes

The three fundamental axes (x, y, z) and rotation of the robot head.

Maximum item weight

The maximum item weight is dependent on the item type and quality, the lifting technique used, speed, etc. The maximum item weight is typically around 30 kg.

Capacity

Up to ten transfers a minute. The robot can transfer one, two or more items simultaneously depending on the pallet pattern, the size, weight and quality of the items as well as the type and size of the vacuum head used.

Pallet types

Standard:
800 mm x 1200 mm
1000 mm x 1200 mm
1200 mm x 1200 mm
and any variation in between these sizes.

Load height/ Floor-to-ceiling height*

Standard:

Load height	Floor-to-ceiling
1500 mm	3600 mm
1800 mm	4200 mm
2100 mm	4800 mm
2400 mm	5400 mm
2700 mm	5700 mm

Telescopic z-axis option:

Load height	Floor-to-ceiling
1385 mm	2750 mm
1685 mm	3200 mm
1985 mm	3650 mm
2285 mm	4100 mm

*The values stated are guidance and depend on the type and construction of the vacuum head.

Prepared for the future

The palletising robot can be extended with various conveyor and functional modules.

1. Standard version, with manual pallet handling.



1

2. Robot extended with two-part powered pallet roller conveyors designed for manual lifting trucks. Empty pallets are placed on the left-hand side and conveyed for collection on the right-hand side.



2

3. Robot extended with an empty pallet magazine and powered pallet roller conveyors designed for manual lifting trucks and truck pallet handling.



3

4. Fully automatic palletising system with pallet magazine, pallet roller conveyors and stretch-wrapping machine.

All modules are available in right or left versions to suit your specific requirements.

All modules are part of the SOCO SYSTEM product range.



4

The pictures illustrate systems without safety fence.

Your SOCO SYSTEM dealer:

Head office:

SOCO SYSTEM A/S
Helgeshøj Allé 16D
DK-2630 Taastrup
Denmark
Tel +45 43 52 55 66
Fax +45 43 52 81 16
info@socosystem.com
www.socosystem.com

**SOCO
SYSTEM**



Geberit AG,
Switzerland



Sig. Ágústsson ehf.,
Iceland



Laru,
Germany



Toms Chokolade A/S,
Denmark



Rioja Alta S.A.,
Spain



Bouché Père & Fils,
France



United Milk plc,
United Kingdom



Altmark Käserei,
Germany